



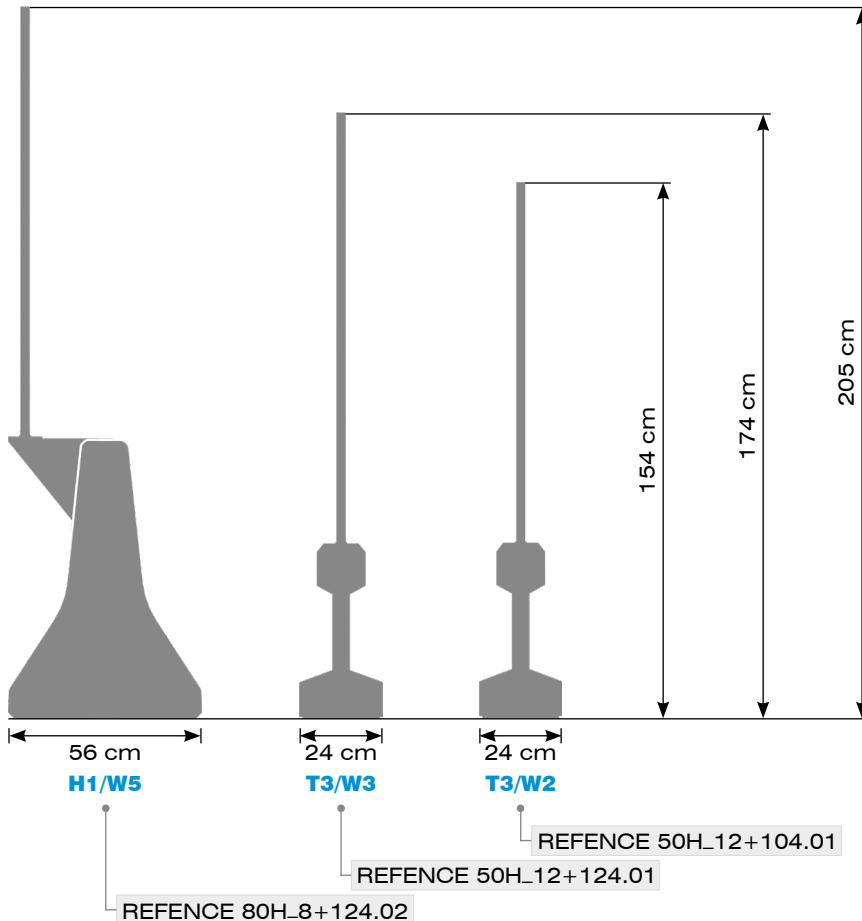
**INTEGRATED FENCES AND EMERGENCY GATE
TESTED IN ACCORDANCE WITH EN 1317**



SAFETY BARRIER - VISUAL BARRIER -

Three tested systems: H1/W5 - T3/W2 - T3/W3

- The REFENCE product line offers vehicle restraint systems with integrated fences
- High work safety: no climb overs - no reach into traffic
- Visual and debris protection for oncoming traffic with nontransparent and wind-permeable safety net



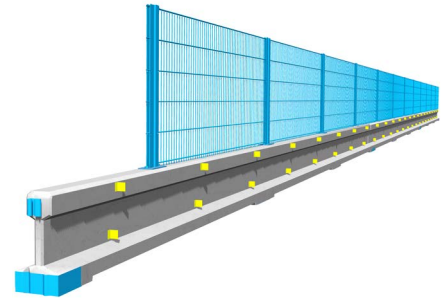
REBLOC® ADVANTAGES

- Tested system range in accordance with EN 1317-1/2
- Safe separation of construction site and traffic lanes
- Combination of work, visual, debris dust and climb over protection
- Sufficient space for traffic lanes in construction site thanks to low system width
- Easy and quick installation
- Form- and force-locking connection by integrated, patented REBLOC® coupling (without loose parts): prevents installation errors and reduces the risk of vandalism

REFERENCE 50H_12+104.01

T3 W2

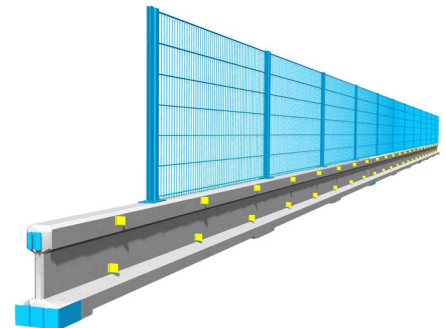
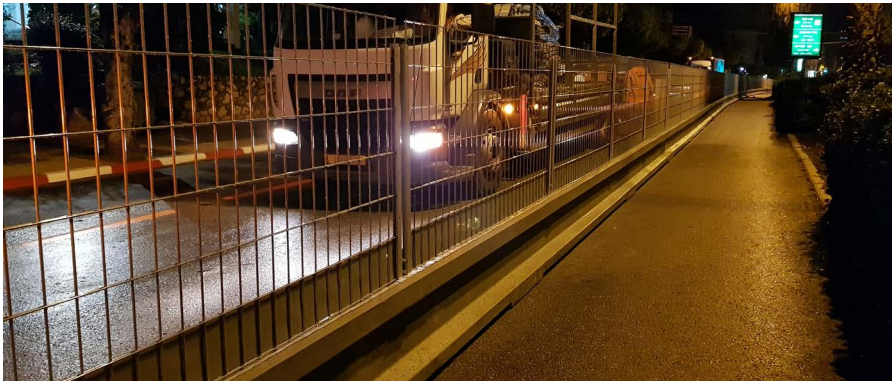
- Total height 154 cm
- Compact system width 24 cm
- Symmetric design for contraflow applications



REFERENCE 50H_12+124.01

T3 W3

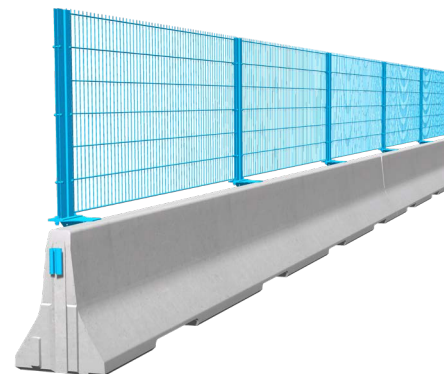
- Total height 174 cm
- Compact system width 24 cm
- Symmetric design for contraflow applications



REFERENCE 80H_8+124.02

H1 W5

- Total height 205 cm
- High-performance H1-system with only 56 cm width
- REBLOC 80H_8 also available as free standing H2/W5 (without fence)
- Ideal protection for workers



TESTED EMERGENCY GATE

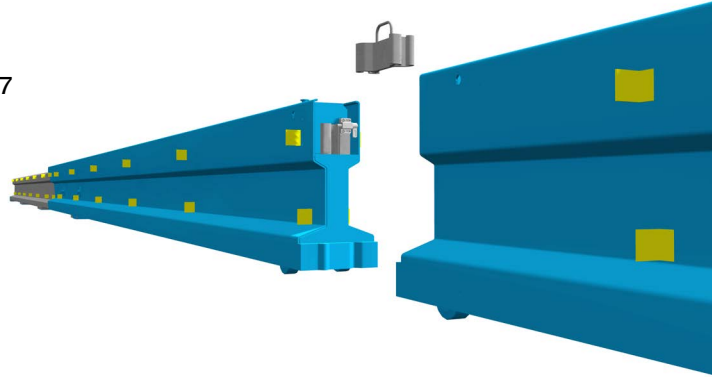
Rapid opening for emergency and authorized vehicles

REBLOC 50H_EG

T3

W4

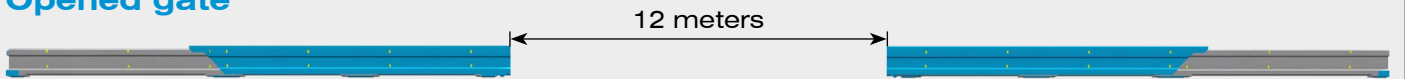
- Tested emergency gate in accordance with EN 1317
- Openings up to 12 m length possible
- Easy and quick opening/closing without tools (handle bar integrated)
- No protruding parts into traffic when opened or closed
- Positioning of emergency gate anywhere in the barrier chain possible



Closed gate



Opened gate



REBLOC GmbH

Wiener Straße 662
3571 Gars/Kamp

Tel.: +43 (0) 2985 30528-2900
Fax: +43 (0) 2985 30528-2901
office@rebloc.com

www.rebloc.com

More information about REBLOC®



Product inquiries:
inquiry@rebloc.com

V1.0 - Copyright and pictures: REBLOC GmbH,
changes and misprints reserved.